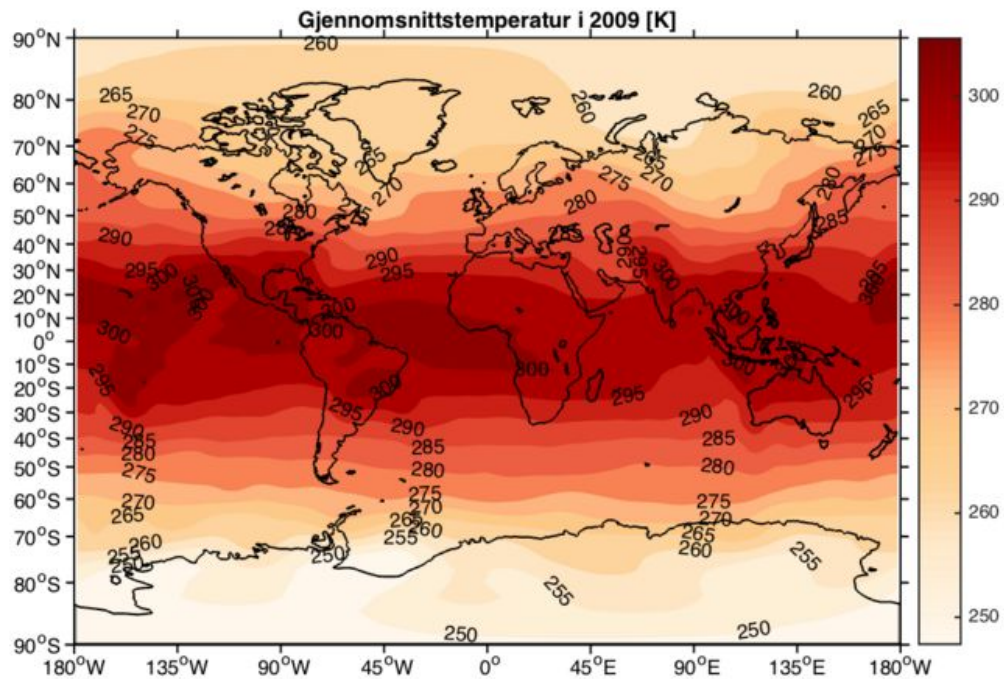
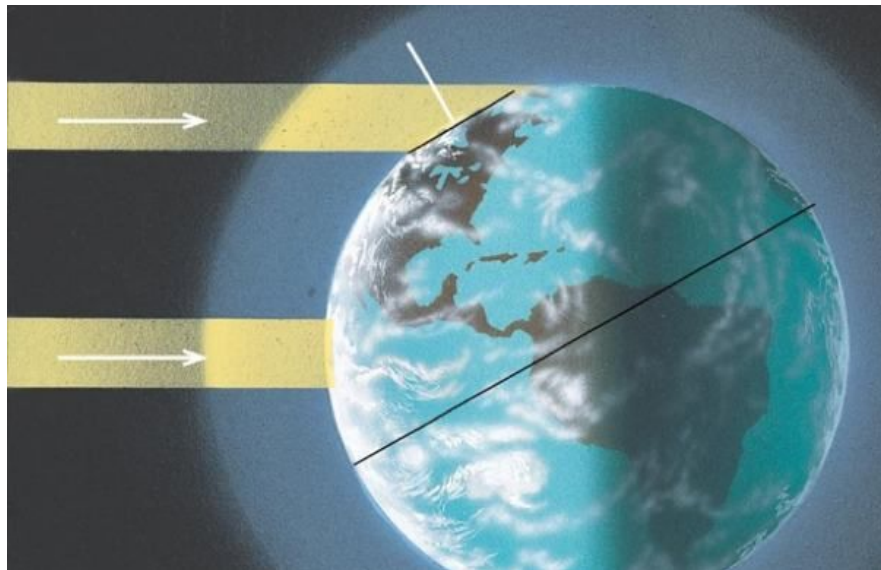


Temperaturendring fra pol til pol



Oppgave 1

Hvorfor tror du det er varmere ved ekvator enn ved polene?

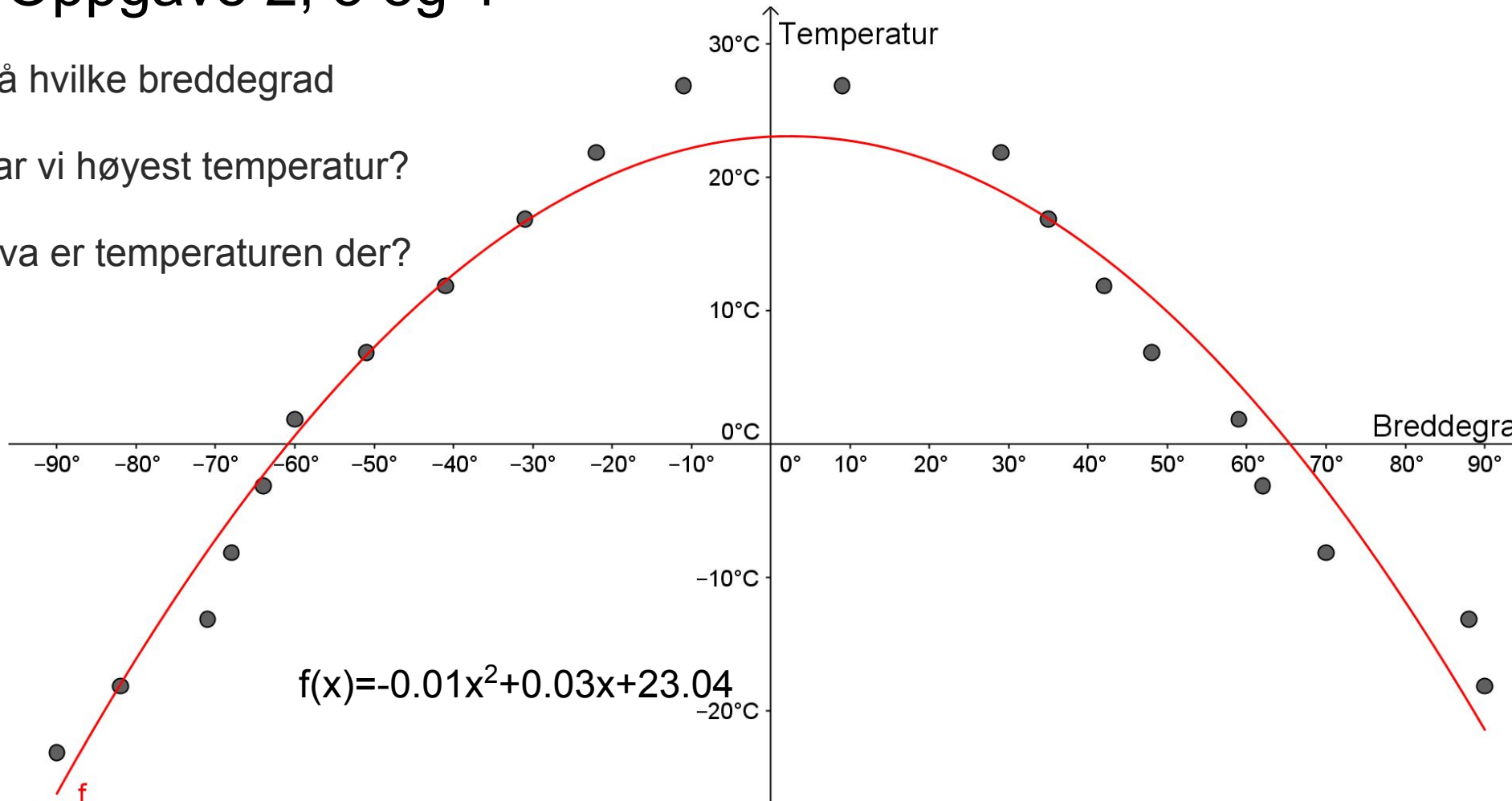


Oppgave 2, 3 og 4

På hvilke breddegrad

har vi høyest temperatur?

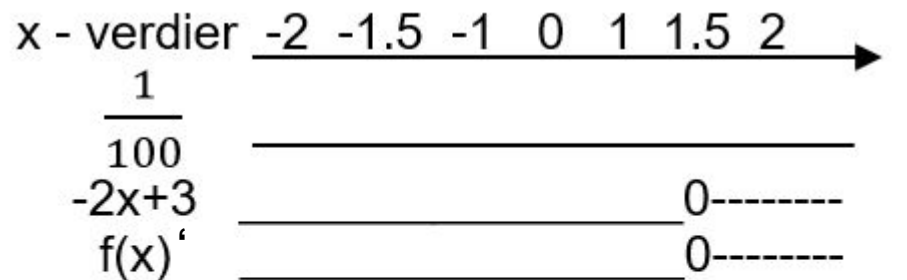
Hva er temperaturen der?



Oppgave 5

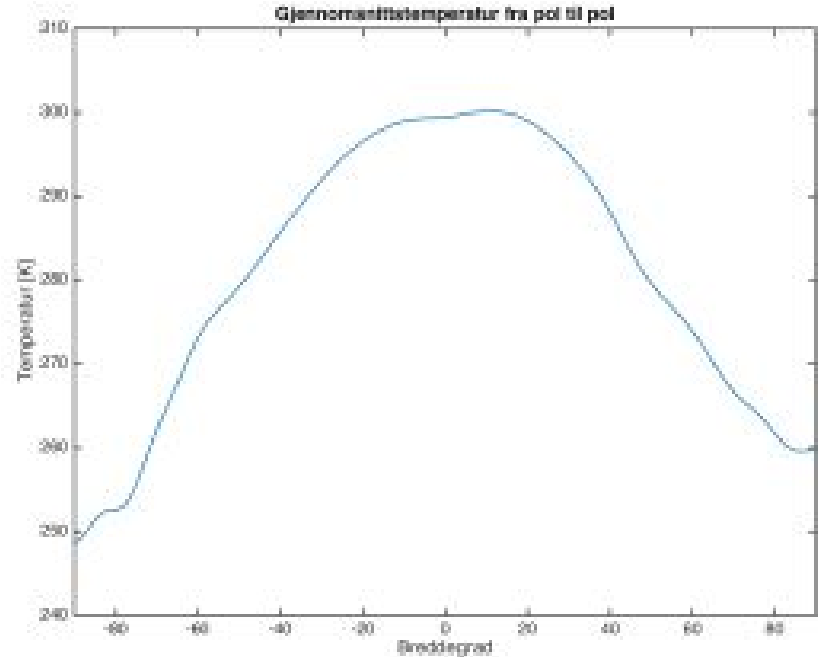
$$f(x)' = -(0.01x^2)' + (0.03x)' + (23.04)' = 1/100 * (-2x + 3)$$

$$f(x)'' = -0.02$$



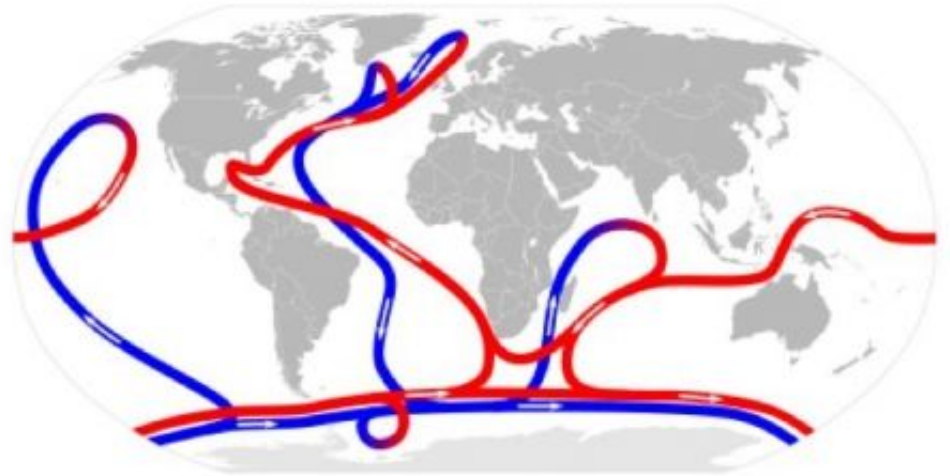
Oppgave 6

Hvorfor er temperaturen forskjøvet
mot den nordlige halvkulen?



Oppgave 7

Hvorfor blir polene varmere og varmere og ikke kaldere og kaldere?



Kilder

- http://www.esa.int/var/esa/storage/images/esa_multimedia/images/2000/10/meteosat-2_earth_image/9220246-5-eng-GB/Meteosat-2_Earth_image_node_full_image.jpg
- https://skolelab.uib.no/blogg/ekte_data/2015/11/04/temperaturendring-fra-pol-til-pol/
- <http://www.climatecentral.org/news/in-global-warming-northern-hemisphere-is-outpacing-the-south-15850>